

# The Trinity University Networking System



The Trinity Network uses a Light Area Network (or LAN) to connect city and country – wide.

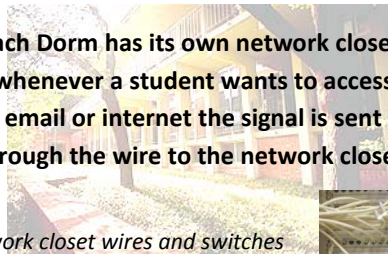
*Some students have a wireless connection which enables them to have portable and convenient networking, which is also called ethereal internet.*



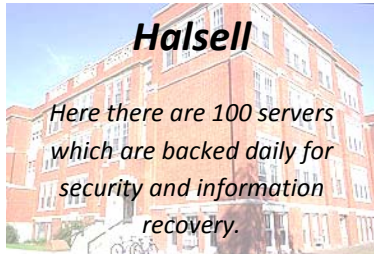
*Other students can only access the internet when their computer is hooked up to a wire through the phone line, which does not necessarily allow portable networking.*

**Each Dorm has its own network closet; whenever a student wants to access email or internet the signal is sent through the wire to the network closet.**

*Network closet wires and switches*



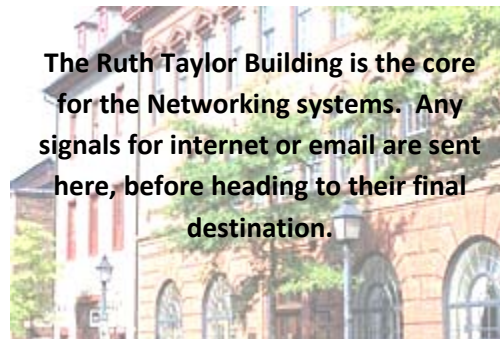
**Cables called Fiberoptics connect everything to the core network**



## **Halsell**

*Here there are 100 servers which are backed daily for security and information recovery.*

*This is the path for the local networking, such as if someone wanted to access the group and class file, the Y Drive within Tucc-Tiger, or the Quest program.*

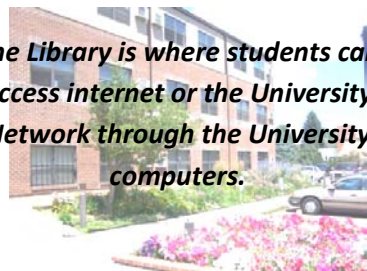


**The Ruth Taylor Building is the core for the Networking systems. Any signals for internet or email are sent here, before heading to their final destination.**



## **Cobb-Racy**

*If a student wanted to access the internet; the signal would follow the path to Cobb-Racy. With ATnT service, the connection speed is 100 megabytes.*



**The Library is where students can access internet or the University Network through the University computers.**