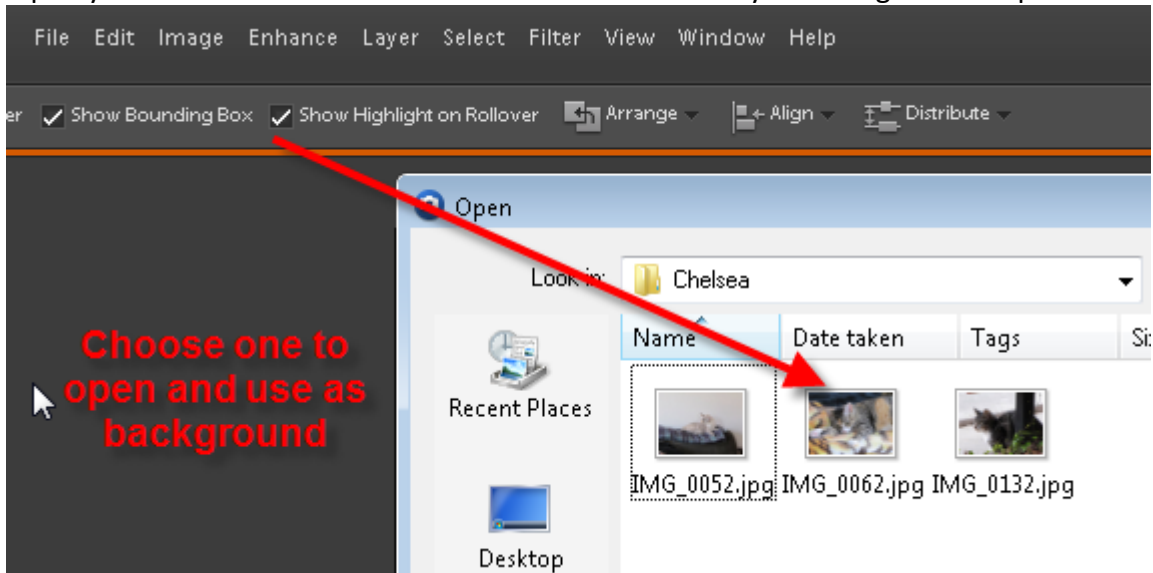


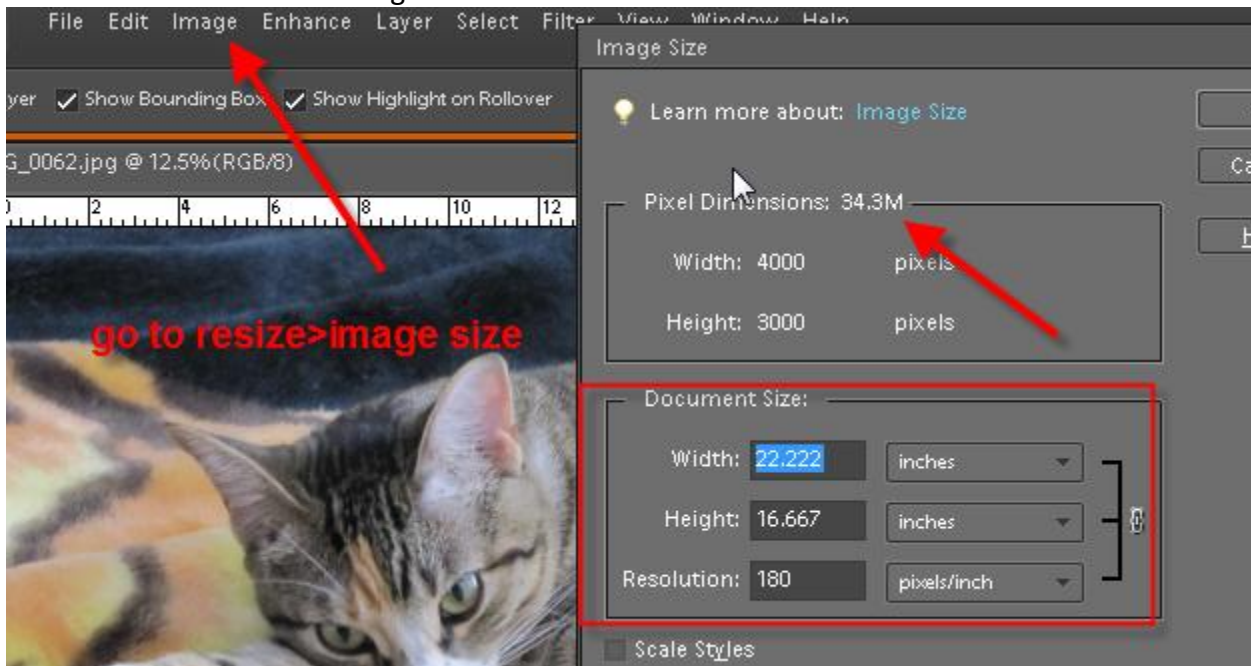
Open Photoshop Elements and Click on Edit (other versions may look different)



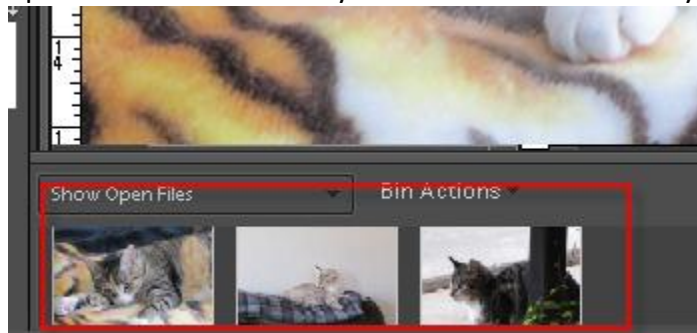
Open your Best Pictures folder and choose one to use as your background – open it in PSE:



See what size is it and how large the file is:



Open the other two – they will serve as additional layers on your photocollage.



Now comes the mysterious creative part – I cannot help you with this – activate the Imagination Tool and select parts of the second and third picture to move over to the background – add a text layer if you like:

